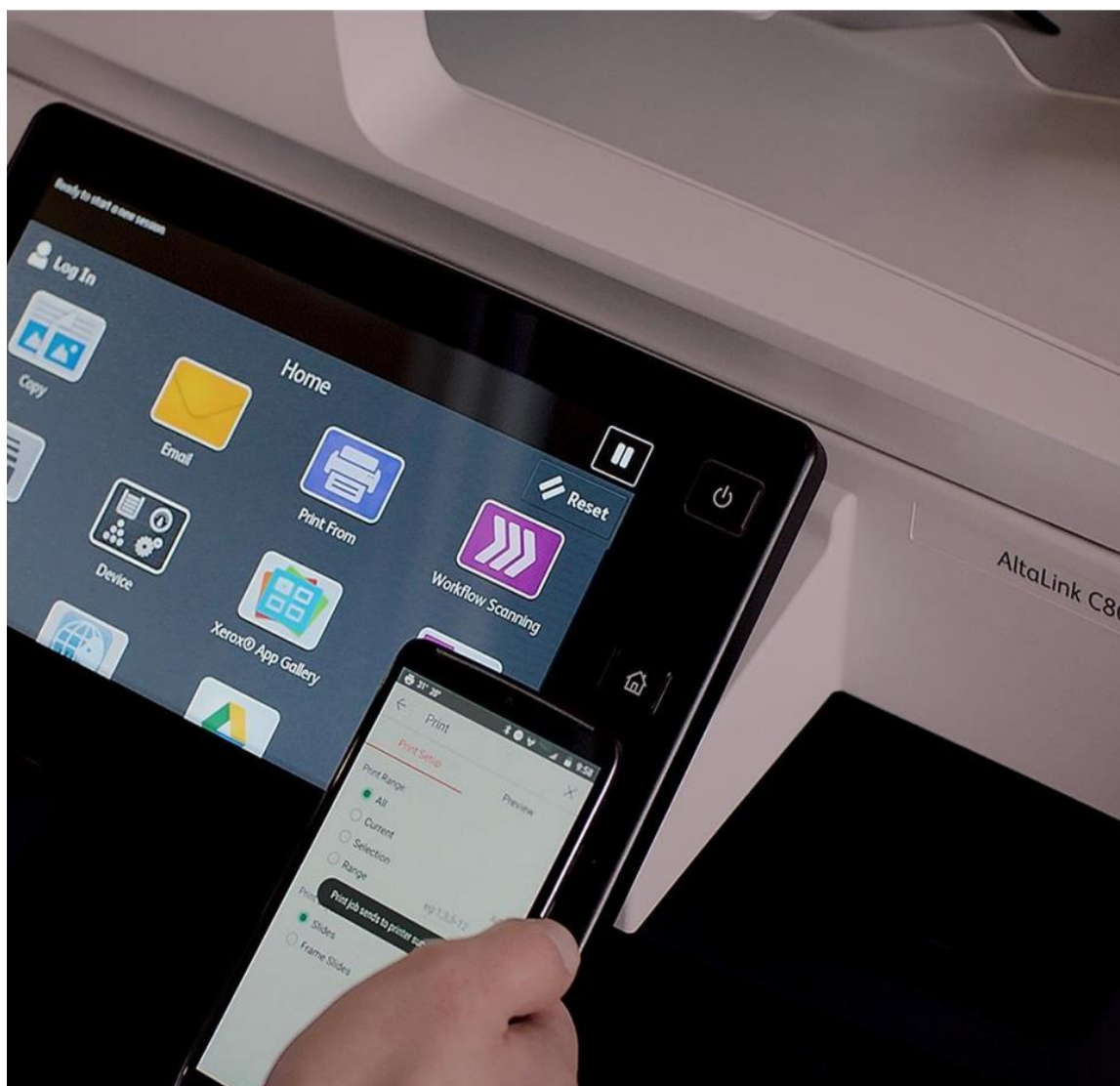


Security Guide

Xerox® Workflow Central App



© 2021 Xerox Corporation. All rights reserved. Xerox® and Connectkey® are a trademarks of Xerox Corporation in the United States and/or other countries. BR32803

Other company trademarks are also acknowledged.

Document Version: 1.0 (February 2021).

Contents

1. Introduction	1-1
Purpose	1-1
Target Audience	1-1
Disclaimer	1-1
2. Product Description – Web Application	2-2
Overview	2-2
App Hosting.....	2-2
Components	2-3
Architecture and Workflows	2-4
Data flow Diagram.....	2-4
User Data Protection.....	2-9
Application data stored in the Xerox cloud.....	2-9
Application data stored in the ABBYY Cloud OCR service.....	2-9
Application data stored in the ZamZar Audio service	2-9
Application data stored in the Ballistic Echo Redaction service	2-9
Application data stored in the Google Vision service.....	2-10
Application data stored in the Google DLP service.....	2-10
Application data stored in the Microsoft Translator service	2-10
Local Environment	2-10
3. Product Description – ConnectKey Application	3-11
Overview	3-11
App Hosting.....	3-11
Components	3-12
Architecture and Workflows	3-13
Data flow Diagram.....	3-13
User Data Protection.....	3-16
Application data stored in the Xerox cloud.....	3-16
Application data stored in the ABBYY Cloud OCR service.....	3-16
Application data stored in the ZamZar Audio service	3-16
Application data stored in the Ballistic Echo Redaction service	3-16
Application data stored in the Google Vision service.....	3-17
Application data stored in the Google DLP service.....	3-17

Application data stored in the Microsoft Translator service	3-17
Local Environment	3-17
4. General Security Protection.....	4-18
User Data Protection within the products.....	4-18
Document and File Security	4-18
Hosting - Microsoft Azure	4-18
Cloud Storage – Microsoft Azure	4-18
Xerox® Workplace Suite/Cloud and Single Sign-On Services	4-18
User Data in transit	4-19
Secure Network Communications.....	4-19
Xerox Workplace Suite/Cloud and Single Sign-On Services.....	4-19
5. Additional Information & Resources.....	5-20
Security @ Xerox	5-20
Responses to Known Vulnerabilities.....	5-20
Additional Resources	5-20

1. Introduction

Purpose

The purpose of the Security Guide is to disclose information for Xerox® Apps with respect to device security. Device security, in this context, is defined as how data is stored and transmitted, how the product behaves in a networked environment, and how the product may be accessed, both locally and remotely. This document describes design, functions, and features of the Xerox® Apps relative to Information Assurance (IA) and the protection of customer sensitive information. Please note that the customer is responsible for the security of their network and the Xerox® Apps do not establish security for any network environment.

This document does not provide tutorial level information about security, connectivity or Xerox® App features and functions. This information is readily available elsewhere. We assume that the reader has a working knowledge of these types of topics.

Target Audience

The target audience for this document is Xerox field personnel and customers concerned with IT security. It is assumed that the reader is familiar with the apps; as such, some user actions are not described in detail.

Disclaimer

The content of this document is provided for information purposes only. Performance of the products referenced herein is exclusively subject to the applicable Xerox® Corporation terms and conditions of sale and/or lease. Nothing stated in this document constitutes the establishment of any additional agreement or binding obligations between Xerox® Corporation and any third party.

2. Product Description – Web Application

Overview

This Xerox® Solution delivers 2 separate software offerings, each aligning to meet specific user goals. This section applies to the Web App which is run from a compatible web browser on a PC, Tablet, Laptop computer or Mobile phone.

The Xerox® Workflow Central App provides multiple workflows for the logged in customer based on their account privileges.

Application	What can I do?
Web App	<ul style="list-style-type: none">• Create an account• Login to my account• Purchase a subscription• Manage user access to a subscription• View available document workflows• Execute a document workflow• Save a customized document workflow

Table 1 Web App user benefits

APP HOSTING

The Web App consists completely of cloud hosted components that are accessed via a web browser. A brief description of each can be found below.

Web App

The Web App consists of three key components, the Web App User Interface, the Workflow Central App Service Interface and the Workflow Central Microservices Interface. These components enable the following behavior in a web browser:

1. Provides the user with the application UI that executes functionality in the cloud.
2. Executes Microservices, which delegates work such as document format conversion and language translation.

Xerox App Gallery

The App Gallery component is a web application hosted on the Microsoft Azure Cloud System. The App Gallery Component implements the following functions for the Xerox® Workflow Central Web App: Authentication, Account Creation, Account Management, Access List Management, Access Authorization, App Subscription Purchase, App Subscription Management, and CK App Installation on Xerox® Devices.

Xerox Translation Service

The Xerox® Translation Service component is a set of translation APIs hosted in the Microsoft Azure Cloud System. The Web App uses the API to translate documents into a different language while maintaining the layout and format of the original document.

ABBYY Cloud OCR Service

The ABBYY Cloud OCR Service component is a set of partner, cloud hosted Optical Character Recognition (OCR) and document format conversion APIs. Workflow Central uses the API to convert documents into one of the following Microsoft formats: DOCX, PPTX or XLXS.

Microsoft Translator Service

The Microsoft Translator Service component is a set of partner, cloud hosted language translation APIs.

Zamzar Audio Service

The Zamzar Audio Service component is a set of partner, cloud hosted audio file conversion APIs. Workflow Central uses the Zamzar Audio API to convert a document into an Audio file.

Google Vision Service

The Google Vision Service component is a set of partner, cloud hosted OCR APIs. Workflow Central uses the API to generate editable text documents from an image of a handwritten document.

Ballistic Echo Redaction Service

The Ballistic Echo Redaction Service component is a set of partner, cloud hosted document redaction APIs. Workflow Central uses the API to generate a document with a set of specified data redacted from the document.

Google DLP Service

The Google DLP (Data Loss Prevention) Service component is a set of partner, cloud hosted document analysis and redaction APIs.

SendGrid Email Service

The SendGrid Email Service component is a partner, cloud hosted email services platform. Workflow Central uses the SendGrid API to send email when it is specified in a document workflow.

COMPONENTS**Xerox® Workflow Central App – Web UI**

The Web UI component is a service hosted on the Microsoft Azure Cloud System. The Web UI component is responsible for hosting the web pages, which are displayed in the User's web browser on their PC.

Xerox® Workflow Central App – Service Interface

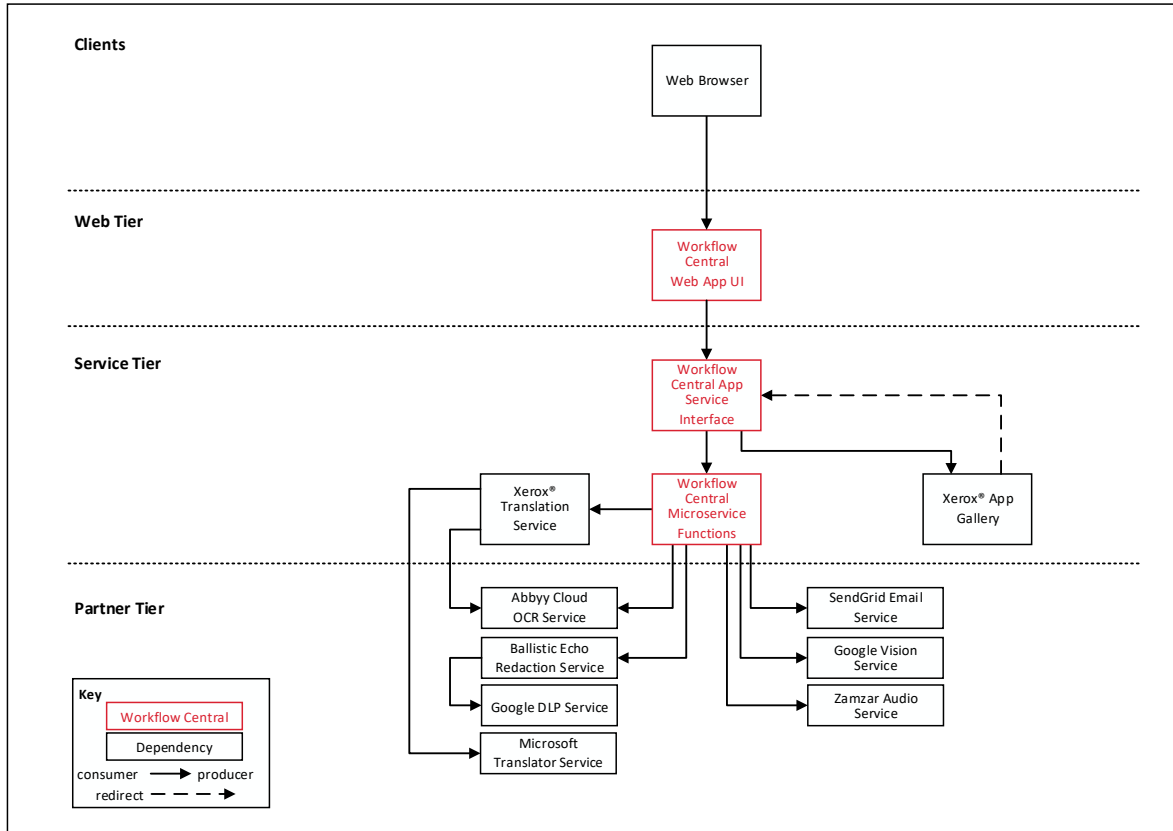
The Service Interface component is a service hosted on the Microsoft Azure Cloud System. The Service Interface provides the business logic services.

Xerox® Workflow Central App - Microservices

The Microservices component is a set of Microsoft Azure Functions hosted on the Microsoft Azure Cloud System. The various microservices interface with a host of 3rd Party APIs to perform specific operations like Audio Conversion, Translation, Format Conversion, OCR and Email.

Architecture and Workflows

DATA FLOW DIAGRAM



Workflows

Create Account

- Step 1:** User enters the URL for the Web App in a web browser on their PC/Laptop/Tablet.
- Step 2:** User selects the "Create Account" button.
- Step 3:** User enters required information for Account Creation and selects OK button.
- Step 4:** User receives an email with instructions on how to complete the creation of their account.
- Step 5:** User opens the email and clicks on a link to complete the creation of their account from the web browser on their PC/Laptop/Tablet or Mobile Phone.

Purchase Subscription

- Step 1:** User enters the URL for the Web App in a web browser on their PC/Laptop/Tablet or Mobile Phone.
- Step 2:** User selects the "Log In" button and enters their account username and password.
- Step 3:** User selects the "View Plans and Pricing" button.
- Step 4:** User selects the Plan they wish to purchase.
- Step 5:** User chooses the "Subscription Duration" and "Subscription Plan" and then selects the "Checkout" button.
- Step 6:** User enters Payment information and selects the "Place Order" button.
- Step 7:** An order confirmation with order number is displayed.
- Step 8:** User receives an email with a payment receipt.

Add User Access to Subscription

- Step 1:** User enters the URL for the Web App in a web browser on their PC/Laptop/Tablet or Mobile Phone.

- Step 2:** User selects the “Log In” button and enters their account username and password.

- Step 3:** User navigates to the Accounts page.

- Step 4:** User selects the “Invite” button to provide access to the subscription for another user.

- Step 5:** User enters the email address of the user whom they wish to grant access to the App subscription.

- Step 6:** The invited User receives an email informing them that they have been granted access to the App subscription along with a link to create an account.

- Step 7:** Invited User opens the email and clicks on a link to complete the creation of their account from the web browser on their PC/Laptop/Tablet or Mobile Phone.

Execute a Document Workflow

- Step 1:** User enters the URL for the Web App in a web browser on their PC/Laptop/Tablet or Mobile Phone.

- Step 2:** User selects the “Log In” button and enters their account username and password.

- Step 3:** The Web App displays the document workflows available for execution by the user.

- Step 4:** User selects a document workflow to execute.

- Step 5:** User navigates to and selects the input file for the document workflow.

- Step 6:** User modifies the settings for each operation defined in the document workflow

- Step 7:** User defines the settings for where to put the output from the document workflow (Email or Save to Local File).

- Step 8:** User selects Run button to start the execution of the document workflow.

- Step 9A:** If Email was defined as the output setting, for the document workflow, then an email is sent to the specified recipients with a link to download the generated output file.

- Step 9B:** If Save to Local File was defined as the output setting, for the document workflow, then the generated output file is saved to the specified location.

Save Customized Document Workflow

- Step 1:** User enters the URL for the Web App in a web browser on their PC/Laptop/Tablet or Mobile Phone.

- Step 2:** User selects the “Log In” button and enters their account username and password.

- Step 3:** The Web App displays the document workflows available for execution by the user.

- Step 4:** User selects a document workflow to execute.

- Step 5:** User navigates to and selects the input file for the document workflow.

- Step 6:** User modifies the settings for each operation defined in the document workflow

- Step 7:** User defines the settings for where to put the output from the document workflow (Email or Save to Local File).

- Step 8:** User selects “Save as New” button to create a new customized document workflow.

- Step 9:** User enters a document workflow name, selects an icons and chooses whether the document workflow will be private or public.

- Step 10:** User selects the “Save” button to create the customized document workflow.

User Data Protection

APPLICATION DATA STORED IN THE XEROX CLOUD

User data related to the categories below are stored in cloud persistent storage.

- Customized workflows explicitly saved by the user
- Workflow data, including intermediate processing files and output files, for workflow jobs that are processing or pending completion due to required user interaction.
- Logs of completed and cancelled workflow jobs.

The following activities will trigger a delete event, for digital document files that meet the associated criteria.

- A delete occurs when the system detects intermediate processing files exist after a job has completed.
- A delete occurs for workflow output files, where the user has chosen to have an email sent with a download link, on the 7th day after the output file was created.

The balance of data stored in the cloud, that is unrelated to user Personally Identifiable Information, may be stored indefinitely for event reporting purposes.

APPLICATION DATA STORED IN THE ABBYY CLOUD OCR SERVICE

User documents that have been requested to be converted to a Microsoft® Office format are stored in cloud persistent storage until a delete event occurs.

User documents that need an OCR operation performed are stored in cloud persistent storage until a delete event occurs.

The following activities will trigger a delete event, for the original digital document files and the converted document file.

- A delete occurs when the system detects that the document conversion job has completed and the converted document has been downloaded.

APPLICATION DATA STORED IN THE ZAMZAR AUDIO SERVICE

User documents that have been requested to be converted to an Audio are stored in cloud persistent storage until a delete event occurs.

The following activities will trigger a delete event, for the original digital document files and the converted audio file.

- A delete occurs when the system detects that the document conversion job has completed and the converted document has been downloaded.

APPLICATION DATA STORED IN THE BALLISTIC ECHO REDACTION SERVICE

User documents that have been requested to be redacted are stored in cloud persistent storage until a delete event occurs.

The following activities will trigger a delete event, for the original digital document files and the redacted file.

- A delete occurs when the system detects that the document redaction job has completed and the redacted document has been downloaded.

APPLICATION DATA STORED IN THE GOOGLE VISION SERVICE

User handwritten documents that have been requested to be converted to text are stored in cloud persistent storage until a delete event occurs.

The following activities will trigger a delete event, for the original digital document file and the converted text file.

- A delete occurs when the system detects that the document conversion job has completed and the converted document has been downloaded.

APPLICATION DATA STORED IN THE GOOGLE DLP SERVICE

User documents that have been requested to be redacted are stored in cloud persistent storage until a delete event occurs.

The following activities will trigger a delete event, for the original digital document files.

- A delete occurs when the system detects that the document redaction inspection job has completed and the locations of the redacted data fields, within the document, has been downloaded.

APPLICATION DATA STORED IN THE MICROSOFT TRANSLATOR SERVICE

User documents that have been requested to be translated to a different language are stored in cloud persistent storage until a delete event occurs.

The following activities will trigger a delete event, for the original digital document files and the translated document file.

- A delete occurs when the system detects that the document translation job has completed and the translated document has been downloaded.

LOCAL ENVIRONMENT

Application data transmitted

Application data related to the categories below are transmitted to/from a User's PC/Laptop/Tablet or Mobile Phone.

- Account Login data
- App Access/Entitlement data
- Workflow Input, Output and Control Parameters
- Workflow Execution Status data

Application data stored on the User's PC/Laptop/Tablet or Mobile Phone

- The application stores the user's "access token" in Browser Local Storage. The "access token" has limited lifespan of 2 hours
- The application stores the user's "refresh token" in Browser Session Storage. The "refresh token" has a lifespan of 100 days and can only be used one time. The Browser Session Storage is purged whenever the user closes the browser or closes the browser tab running the app.
- The application will store files, generated during the execution of a workflow, when a workflow is defined to download the workflow's output.

HTTP Cookies

The Web App only stores non-tracking, technically necessary data required by Microsoft Azure.

3. Product Description – Xerox® ConnectKey Application

Overview

This Xerox® Solution delivers 2 separate software offerings, each aligning to meet specific user goals. This section applies to the Xerox ConnectKey App which is executed from a Xerox® Device.

The Xerox® Workflow Central App provides two primary workflows for the logged in customer:

1. Execute a document workflow
2. Save a customized document workflow

Application	What can I do?
ConnectKey App	<ul style="list-style-type: none">• Login to my account• View available document workflows• Execute a document workflow• Save a customized document workflow

Table 1 ConnectKey App user benefits

APP HOSTING

The ConnectKey App depends heavily on cloud hosted components. A brief description of each can be found below.

ConnectKey App

The ConnectKey App consists of four key components, the device weblet, the ConnectKey App User Interface, the Workflow Central App Service Interface and the Workflow Central Microservices Interface. The device weblet is a ConnectKey/EIP web app that enables the following behavior on a Xerox® device:

- Presents the user with an application UI that executes functionality in the cloud.
- Interfaces with the EIP API, which delegates work, such as document scanning and printing.
- Executes Microservices, which delegates work such as document format conversion and language translation.

Xerox® App Gallery

The App Gallery component is a web application hosted on the Microsoft Azure Cloud System. The App Gallery Component implements the following functions for the Xerox® Workflow Central ConnectKey App: Authentication and Access Authorization.

Xerox Extensible Interface Platform® Web Services

During standard usage of the ConnectKey App, calls to the device web services are used to initiate and monitor scan functions and to pull relevant details related to device properties and capabilities.

Xerox Translation Service

The Xerox Translation Service component is a set of translation APIs hosted in the Microsoft Azure Cloud System. The Web App uses the API to translate documents into a different language while maintaining the layout and format of the original document.

ABBYY Cloud OCR Service

The ABBYY Cloud OCR Service component is a set of partner, cloud hosted Optical Character Recognition (OCR) and document format conversion APIs. Workflow Central uses the API to convert documents into one of the following Microsoft formats: DOCX, PPTX or XLXS.

Microsoft Translator Service

The Microsoft Translator Service component is a set of partner, cloud hosted language translation APIs.

Zamzar Audio Service

The Zamzar Audio Service component is a set of partner, cloud hosted audio file conversion APIs. Workflow Central uses the Zamzar Audio API to convert a document into an Audio file.

Google Vision Service

The Google Vision Service component is a set of partner, cloud hosted OCR APIs. Workflow Central uses the API to generate editable text documents from an image of a handwritten document.

Ballistic Echo Redaction Service

The Ballistic Echo Redaction Service component is a set of partner, cloud hosted document redaction APIs. Workflow Central uses the API to generate a document with a set of specified data redacted from the document.

Google DLP Service

The Google DLP (Data Loss Prevention) Service component is a set of partner, cloud hosted document analysis and redaction APIs.

SendGrid Email Service

The SendGrid Email Service component is a partner, cloud hosted email services platform. Workflow Central uses the SendGrid API to send email when it is specified in a document workflow.

COMPONENTS**Xerox® Device with Xerox® Workflow Central App – ConnectKey App**

This is an EIP capable device that can print, scan and execute ConnectKey Apps installed from the Xerox® App Gallery. In this case, the device has the Xerox® Workflow Central App installed.

Xerox® Workflow Central App – ConnectKey App UI

The ConnectKey App UI component is a service hosted on the Microsoft Azure Cloud System. The ConnectKey App UI component is responsible for hosting the web pages, which are displayed on the UI of the Xerox® Device.

Xerox® Workflow Central App – Service Interface

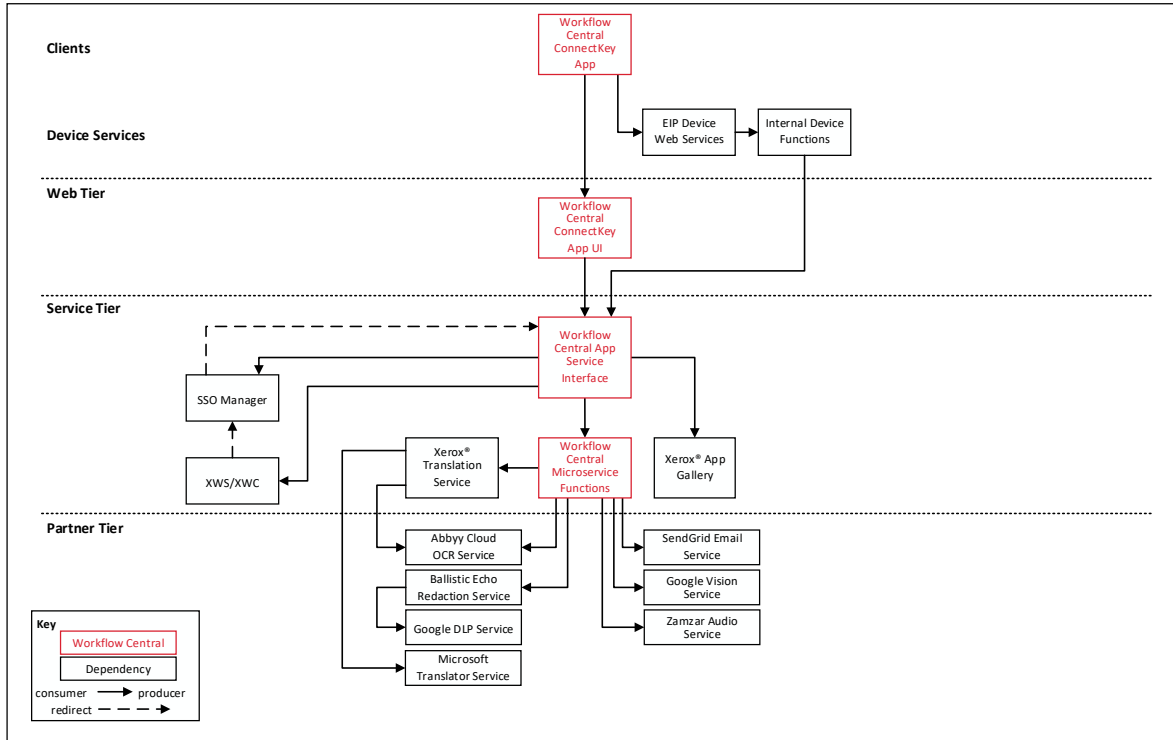
The Service Interface component is a service hosted on the Microsoft Azure Cloud System. The Service Interface provides the business logic services.

Xerox® Workflow Central App – Microservices

The Microservices component is a set of Microsoft Azure Functions hosted on the Microsoft Azure Cloud System. The various microservices interface with a host of 3rd Party APIs to perform specific operations like Audio Conversion, Translation, Format Conversion, OCR and Email.

Architecture and Workflows

DATA FLOW DIAGRAM



Workflows

Execute a Document Workflow

- Step 1:** User Launches the App on the Xerox® Device.
- Step 2:** User enters their account username and password. (If first login, user can agree to save credentials to XWS/C storage for future use. On subsequent logins, credentials are automatically retrieved and applied.)
- Step 3:** The document workflows available for execution by the user are displayed.
- Step 4:** User selects a document workflow to execute.
- Step 5:** User modifies the scanning options (ie; single sided, original size, etc...).
- Step 6:** User modifies the settings for each operation defined in the document workflow
- Step 7:** User defines the settings for where to put the output from the document workflow (Email or Print). *NOTE: Some workflows only support Email as an output option.*
- Step 8:** User selects Run button to start the execution of the document workflow
- Step 9A:** If Email was specified as the output setting, for the document workflow, then an email is sent to the specified recipients with a link to download the generated output file.
- Step 9B:** If Print was defined as the output setting, for the document workflow, then the output document is printed to the Xerox® Device with the defined print options.

Save Customized Document Workflow

- Step 1:** User Launches the App on the Xerox® Device.

- Step 2:** User enters their account username and password. (If first login, user can agree to save credentials to XWS/C storage for future use. On subsequent logins, credentials are automatically retrieved and applied.)

- Step 3:** The document workflows available for execution by the user are displayed.

- Step 4:** User selects a document workflow to execute.

- Step 5:** User modifies the scanning options (ie; single sided, original size, etc...).

- Step 6:** User modifies the settings for each operation defined in the document workflow

- Step 7:** User defines the settings for where to put the output from the document workflow (Email or Print). *NOTE: Some workflows only support Email as an output option.*

- Step 8:** User selects “Save as New” button to create a new customized document workflow.

- Step 9:** User enters a document workflow name, selects an icons and chooses whether the document workflow will be private or public.

- Step 10:** User selects the “Save” button to create the customized document workflow.

User Data Protection

APPLICATION DATA STORED IN THE XEROX CLOUD

User data related to the categories below are stored in cloud persistent storage.

- Customized workflows explicitly saved by the user
- Workflow data, including intermediate processing files and output files, for workflow jobs that are processing or pending completion due to required user interaction.
- Logs of completed and cancelled workflow jobs.

The following activities will trigger a delete event, for digital document files that meet the associated criteria.

- A delete occurs when the system detects intermediate processing files exist after a job has completed.
- A delete occurs for workflow output files, where the user has chosen to have an email sent with a download link, on the 7th day after the output file was created.

The balance of data stored in the cloud, that is unrelated to user Personally Identifiable Information, may be stored indefinitely for event reporting purposes.

APPLICATION DATA STORED IN THE ABBY CLOUD OCR SERVICE

User documents that have been requested to be converted to a Microsoft® Office format are stored in cloud persistent storage until a delete event occurs.

User documents that need an OCR operation performed are stored in cloud persistent storage until a delete event occurs.

The following activities will trigger a delete event, for the original digital document files and the converted document file.

- A delete occurs when the system detects that the document conversion job has completed and the converted document has been downloaded.

APPLICATION DATA STORED IN THE ZAMZAR AUDIO SERVICE

User documents that have been requested to be converted to an Audio are stored in cloud persistent storage until a delete event occurs.

The following activities will trigger a delete event, for the original digital document files and the converted audio file.

- A delete occurs when the system detects that the document conversion job has completed and the converted document has been downloaded.

APPLICATION DATA STORED IN THE BALLISTIC ECHO REDACTION SERVICE

User documents that have been requested to be redacted are stored in cloud persistent storage until a delete event occurs.

The following activities will trigger a delete event, for the original digital document files and the redacted file.

- A delete occurs when the system detects that the document redaction job has completed and the redacted document has been downloaded.

APPLICATION DATA STORED IN THE GOOGLE VISION SERVICE

User handwritten documents that have been requested to be converted to text are stored in cloud persistent storage until a delete event occurs.

The following activities will trigger a delete event, for the original digital document file and the converted text file.

- A delete occurs when the system detects that the document conversion job has completed and the converted document has been downloaded.

APPLICATION DATA STORED IN THE GOOGLE DLP SERVICE

User documents that have been requested to be redacted are stored in cloud persistent storage until a delete event occurs.

The following activities will trigger a delete event, for the original digital document files.

- A delete occurs when the system detects that the document redaction inspection job has completed and the locations of the redacted data fields, within the document, has been downloaded.

APPLICATION DATA STORED IN THE MICROSOFT TRANSLATOR SERVICE

User documents that have been requested to be translated to a different language are stored in cloud persistent storage until a delete event occurs.

The following activities will trigger a delete event, for the original digital document files and the translated document file.

- A delete occurs when the system detects that the document translation job has completed and the translated document has been downloaded.

LOCAL ENVIRONMENT

Application data transmitted

Application data related to the categories below are transmitted to/from the Xerox® Device.

- Account Login data
- App Access/Entitlement data
- Workflow Input, Output and Control Parameters
- Workflow Execution Status data
- Device Session data
- Device Job data

Application data stored on the Xerox® Device

The following app data is stored on the device, encrypted in Browser's internal storage, until the App is uninstalled from the device.

- Device's SNMP V2 public community string

HTTP Cookies

The ConnectKey App only stores non-tracking, technically necessary data required by Microsoft Azure.

4. General Security Protection

User Data Protection within the products

DOCUMENT AND FILE SECURITY

File content is protected during transmission by standard secure network protocols at the channel level. Since document source content may contain Personally Identifiable Information (PII) or other sensitive content, it is the responsibility of the user to handle the digital information in accordance with information protection best practices.

HOSTING - MICROSOFT AZURE

The cloud services are hosted on the Microsoft Azure Network. The Microsoft Azure Cloud Computing Platform operates in the Microsoft® Global Foundation Services (GFS) infrastructure, portions of which are ISO27001-certified. Microsoft has also adopted the new international cloud privacy standard, ISO 27018. Azure safeguards customer data in the cloud and provides support for companies that are bound by extensive regulations regarding the use, transmission, and storage of customer data.

The Apps hosted in the cloud are scalable so that multiple instances may be spun up/down as needed to handle user demand. The service is hosted both in the US and Europe. Users will be routed to the closest server geographically based on server load and network speed.

CLOUD STORAGE – MICROSOFT AZURE

All Azure Storage data is secured when at rest using AES-256 encryption.

For a full description, please follow these links:

Azure Storage

<https://azure.microsoft.com/en-us/blog/announcing-default-encryption-for-azure-blobs-files-table-and-queue-storage/>

XEROX® WORKPLACE SUITE/CLOUD AND SINGLE SIGN-ON SERVICES

The Xerox® ConnectKey App Single Sign-On feature integrates with the Xerox® Workplace Suite/Cloud authentication solution to store user access information for SSO-compatible Xerox Gallery Apps. After the user enters their storage service credentials the first time, the XWS/C solution acts as a storage vault where the login information is securely stored.

All content to be stored in the vault is encrypted with AES 256 by the SSO Manager server before being given to the SSO vault that resides on the XWS/C solution. This ensures that the SSO vault can never view or use the contents being stored in the vault. Only the SSO Manager infrastructure knows how to decrypt the content stored in the vault and only the App knows how to use it.

The SSO Manager service manages the encryption key exchange required for secure communications and encrypts/decrypts the content saved in the vault.

For a full description, please review the Xerox® Workplace Suite/Cloud Information Assurance Disclosure: <https://security.business.xerox.com/en-us/products/xerox-workplace-suite/>

User Data in transit

SECURE NETWORK COMMUNICATIONS

The web pages and app services that constitute the Xerox® Solutions are deployed to Microsoft Azure App Services. All web pages are accessed via HTTPS from a web browser. All communications are over HTTPS. Data is transmitted securely and is protected by TLS security for both upload and download. The default TLS version used is 1.2.

The Xerox® App requires the user to provide proper/valid credentials in order to gain access to the application's features. Authenticated users are allowed to access the features and data using HTTPS.

At launch, the apps must get an authentication/session token through the solution's authentication process. The access token acquired is used for that session of the app.

When using the Xerox® Connect App for Google Drive installed on a Xerox® Device, if the customer environment includes an Authentication solution (e.g., Xerox® Workplace Suite/Cloud) with Single Sign-On functionality enabled, the user can agree to have their user credentials securely stored and automatically applied during subsequent app launches.

All communication is done via HTTPS and the data is transmitted securely and is protected by TLS security. The default TLS version used is 1.2. Xerox App Gallery supplies a link to a Certificate Authority root certificate for validation with the cloud web service. It is the responsibility of the customer to install the certificate on their devices and to enable server certificate validation on the devices.

For more information related to Azure network security, please follow the link:

<https://docs.microsoft.com/en-us/azure/security/azure-network-security>

XEROX WORKPLACE SUITE/CLOUD AND SINGLE SIGN-ON SERVICES

The Xerox® Workplace Suite/Cloud server accepts credential storage requests from the App via the SSO Manager service (the Xerox® App retrieves a vault key from the SSO Manager and uses it to retrieve login credentials from the XWS/C service). All communication is via HTTPS and the data is transmitted securely and is protected by TLS security. The default TLS version used is 1.2.

5. Additional Information & Resources

Security @ Xerox

Xerox maintains an evergreen public web page that contains the latest security information pertaining to its products. Please see <https://www.xerox.com/security>.

Responses to Known Vulnerabilities

Xerox has created a document which details the Xerox Vulnerability Management and Disclosure Policy used in discovery and remediation of vulnerabilities in Xerox software and hardware. It can be downloaded from this page: <https://www.xerox.com/information-security/information-security-articles-whitepapers/enus.html>.

Additional Resources

Security Resource	URL
Frequently Asked Security Questions	https://www.xerox.com/en-us/information-security/frequently-asked-questions
Bulletins, Advisories, and Security Updates	https://www.xerox.com/security
Security News Archive	https://security.business.xerox.com/en-us/news/

Table 2 Additional Resources